

Assessing Marine Endocrine Disrupting Chemicals in the Critically Endangered California Condor: Implications for Reintroduction to Coastal Environments

Authors: Margaret E. Stack, Jennifer M. Cossaboon, Christopher W. Tubbs, L. Ignacio Vilchis, Rachel G. Felton, Jade L. Johnson, Kerri Danil, Gisela Heckel, Eunha Hoh, and Nathan G. Dodder

Mass spectra of unknown compounds detected in marine mammals
from the Gulf of California, Baja California, Mexico

Web Reference: <http://OrgMassSpec.github.io>

Prepared: 2022-01-27 16:02:00

SpecLibBaja2022

OrgMassSpecR version 0.5-3

R version 3.6.2 (2019-12-12)

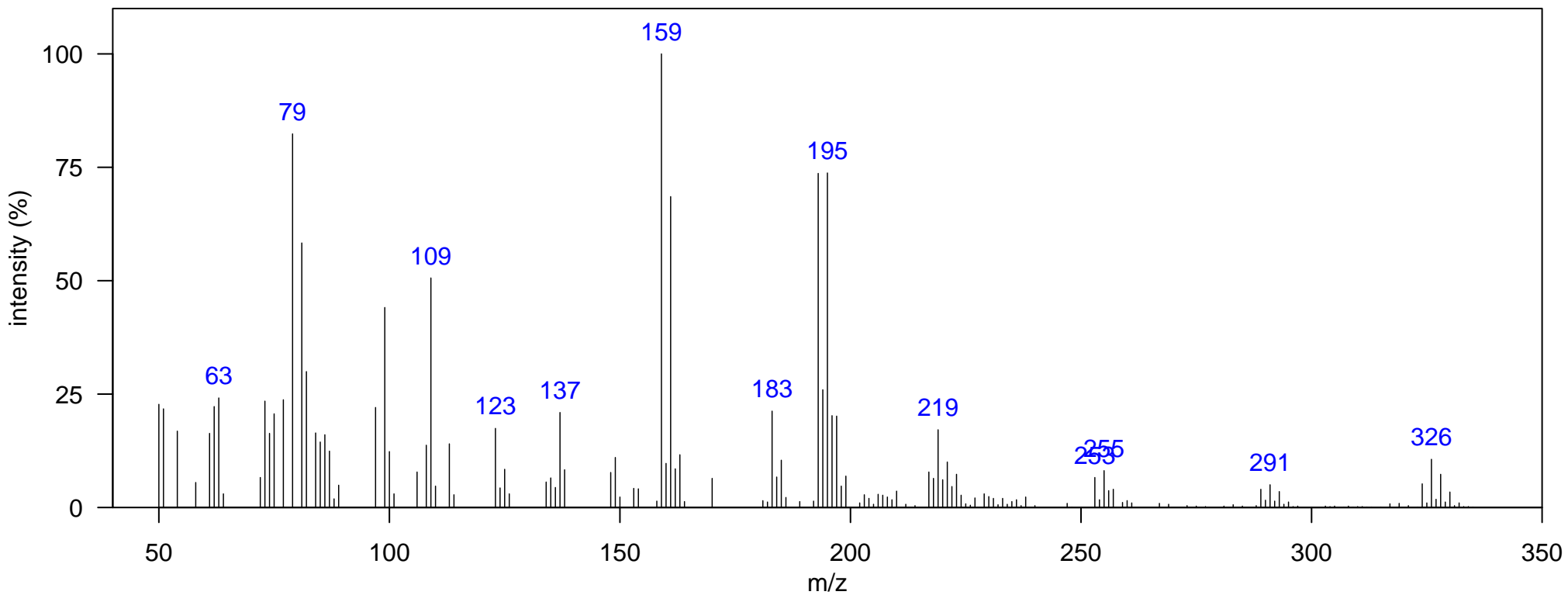
Matrix: Marine Mammal Blubber

Instrument: GCxGC-TOF, EI Mode

Species detected in: Striped dolphin, bottlenose dolphin

1D RT, 2D RT (s): 1184.17 , 1.023

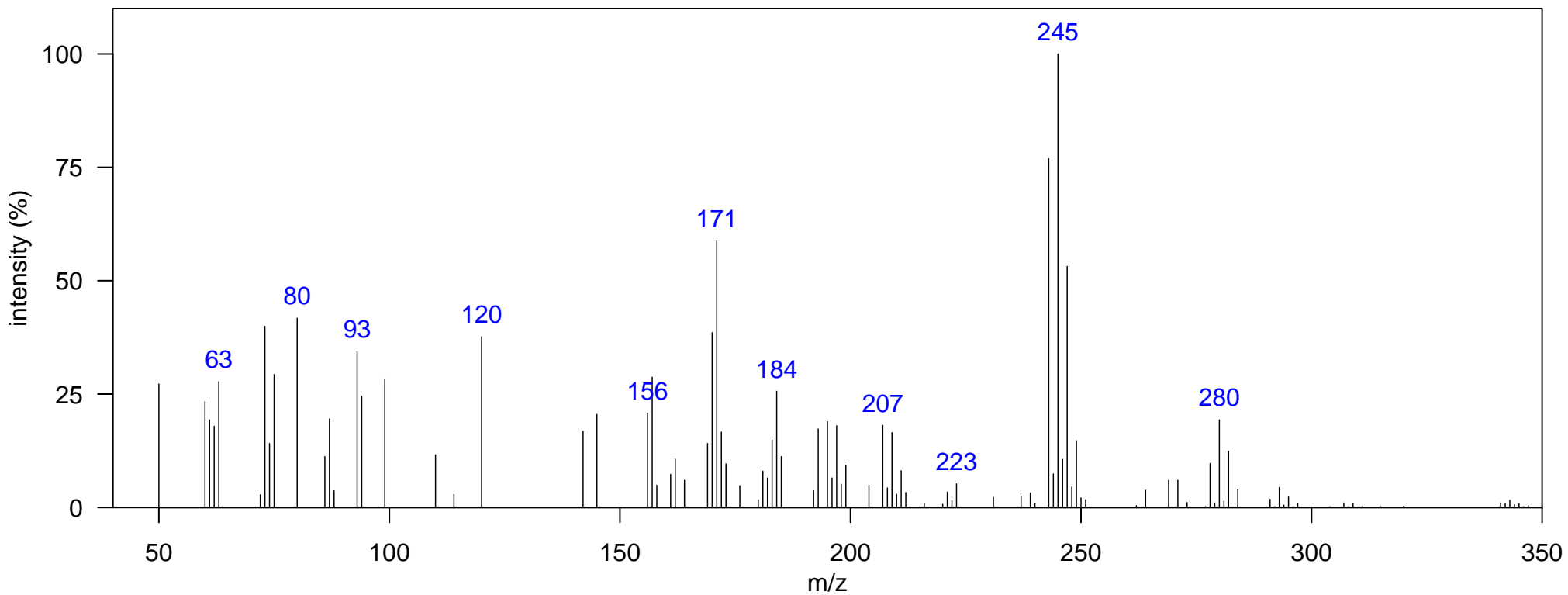
Comment: potentially halogenated compound



Matrix: Marine Mammal Blubber
Species detected in: Striped dolphin

Instrument: GCxGC-TOF, EI Mode
1D RT, 2D RT (s): 1264.62 , 1.023

Comment: potentially halogenated compound



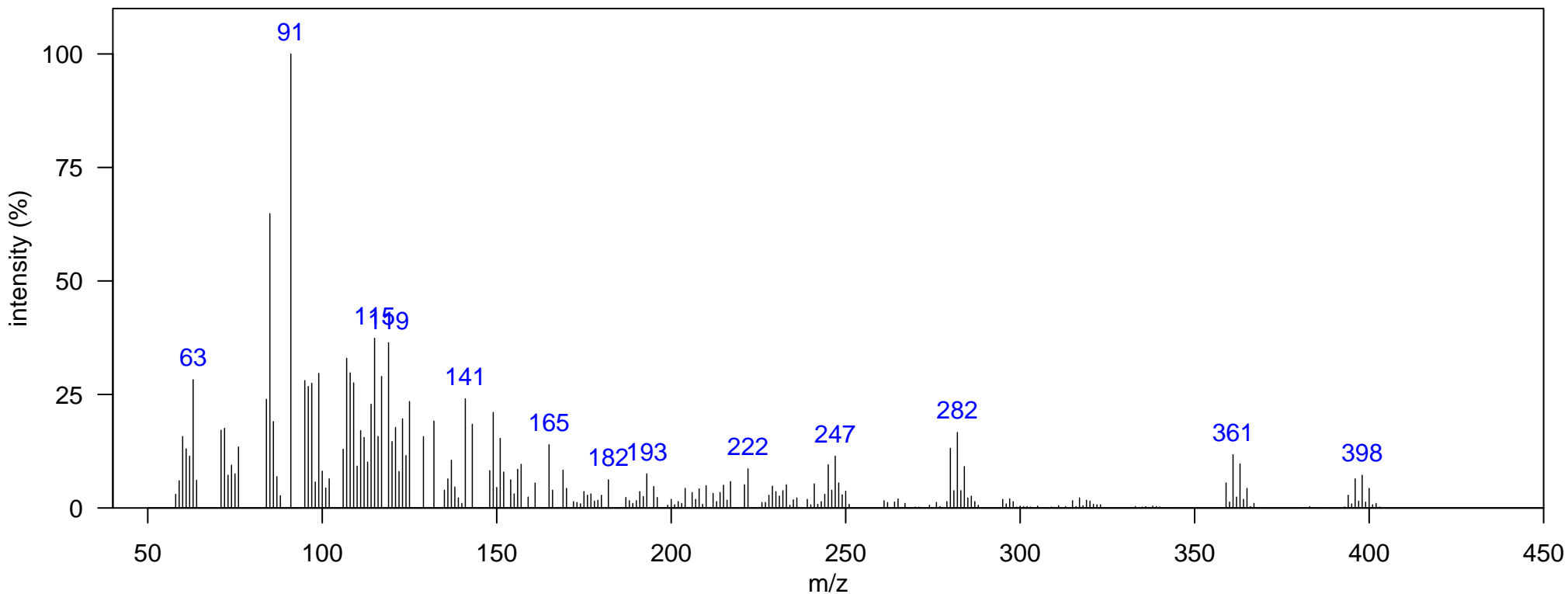
Matrix: Marine Mammal Blubber

Instrument: GCxGC-TOF, EI Mode

Species detected in: Striped dolphin, bottlenose dolphin

1D RT, 2D RT (s): 1296.1 , 1.063

Comment: potentially halogenated compound



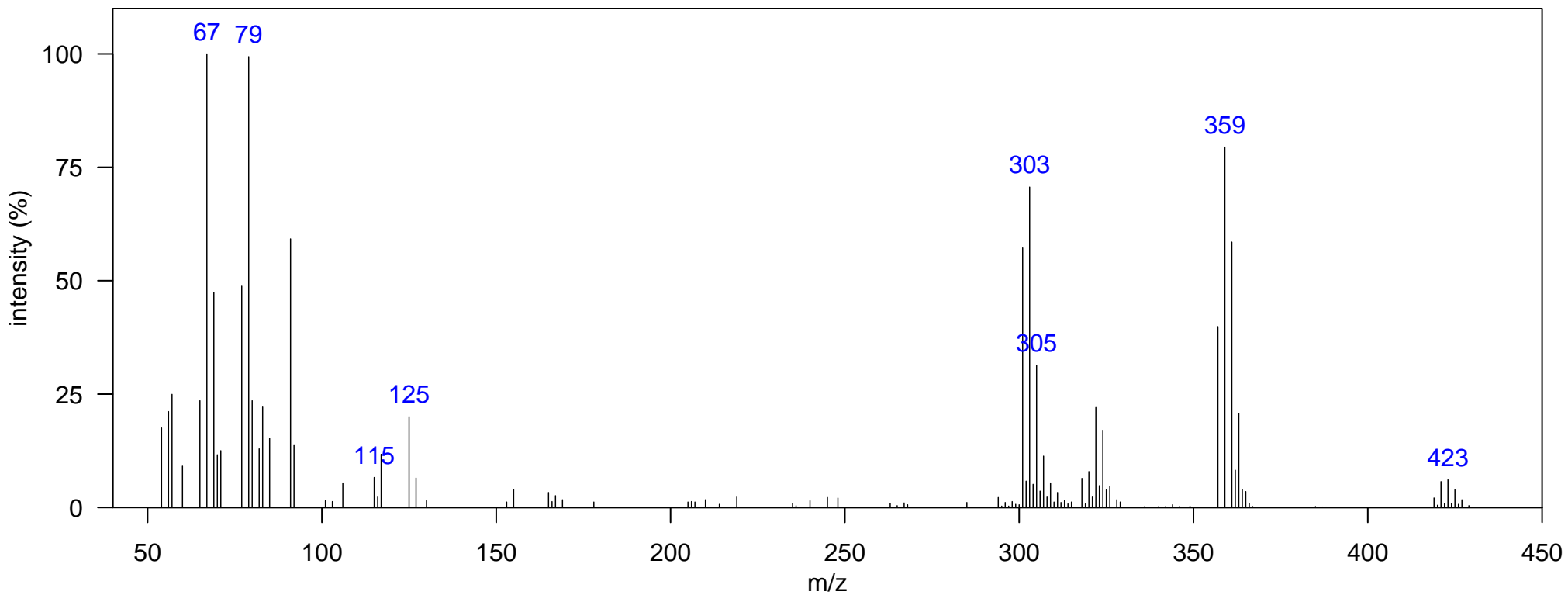
Name: Baja unknown 4

Class: Unknown

Matrix: Marine Mammal Blubber
Species detected in: Striped dolphin

Instrument: GCxGC-TOF, EI Mode
1D RT, 2D RT (s): 1373.06 , 1.069

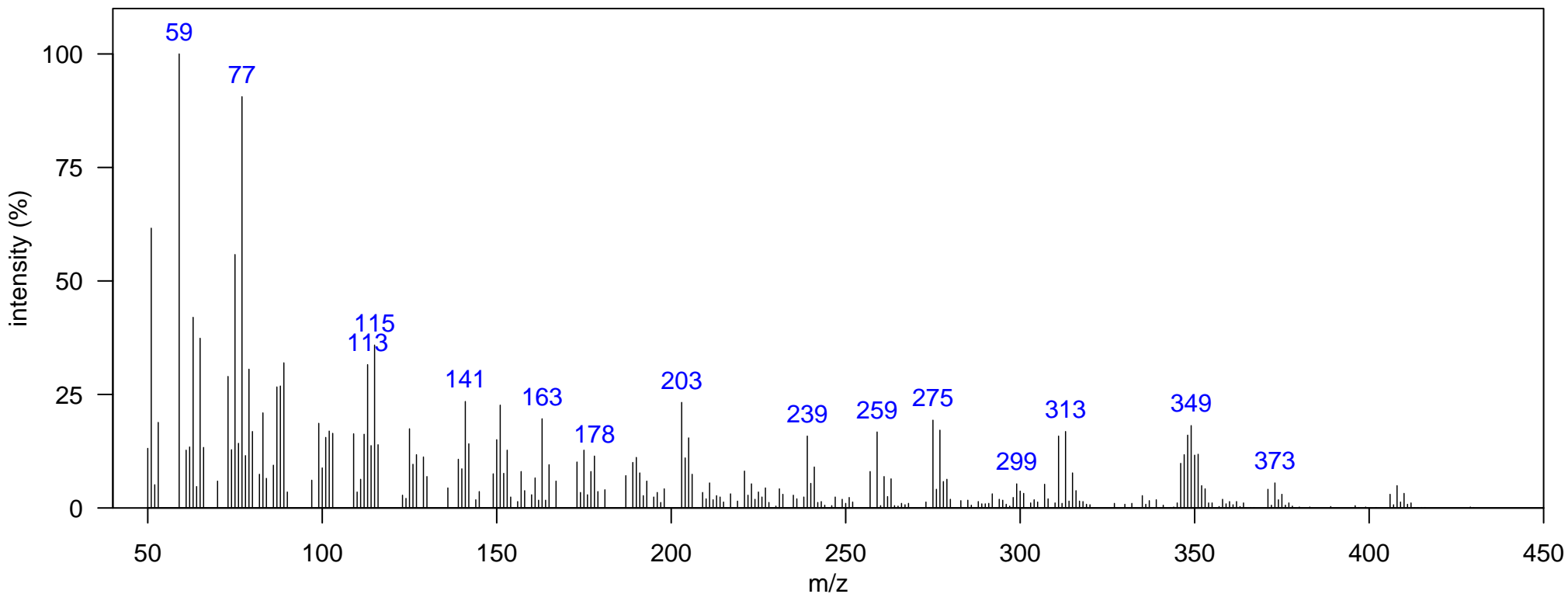
Comment: potentially halogenated compound



Matrix: Marine Mammal Blubber
Species detected in: Striped dolphin

Instrument: GCxGC-TOF, EI Mode
1D RT, 2D RT (s): 1474.5 , 1.089

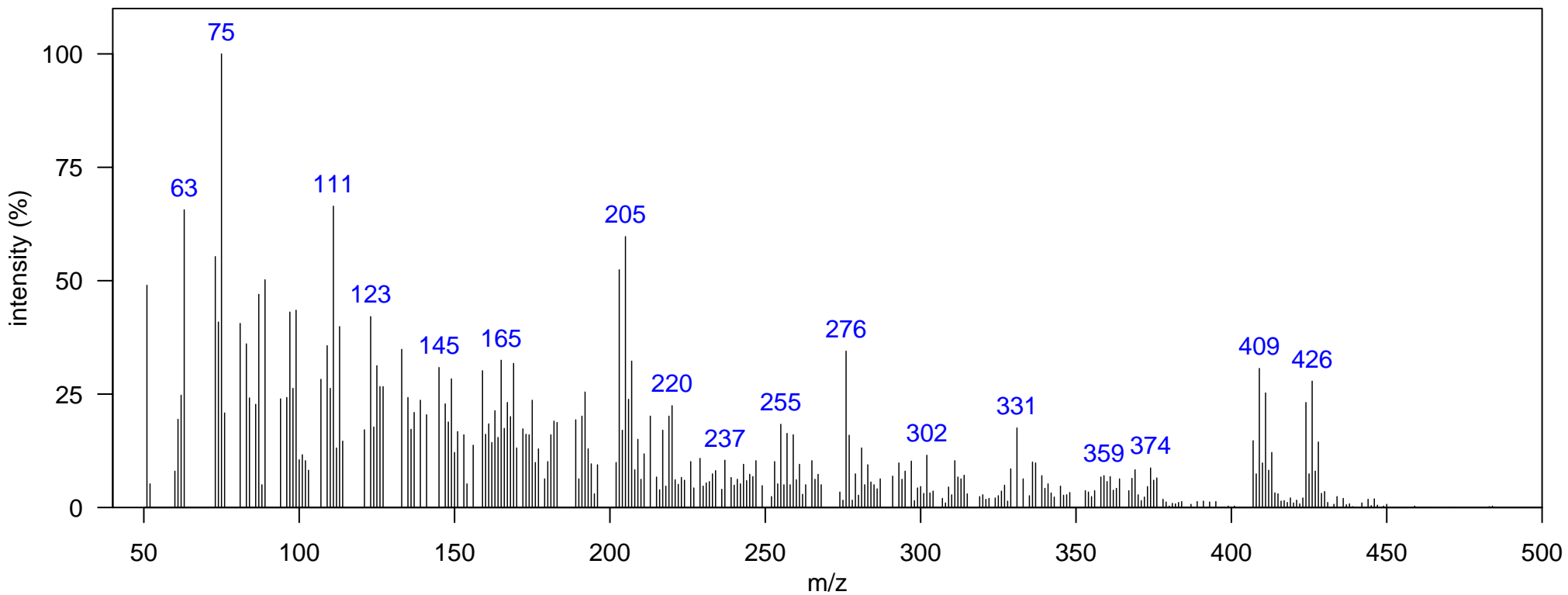
Comment: potentially halogenated compound



Matrix: Marine Mammal Blubber
Species detected in: Striped dolphin

Instrument: GCxGC-TOF, EI Mode
1D RT, 2D RT (s): 1586.44 , 1.393

Comment: potentially halogenated compound



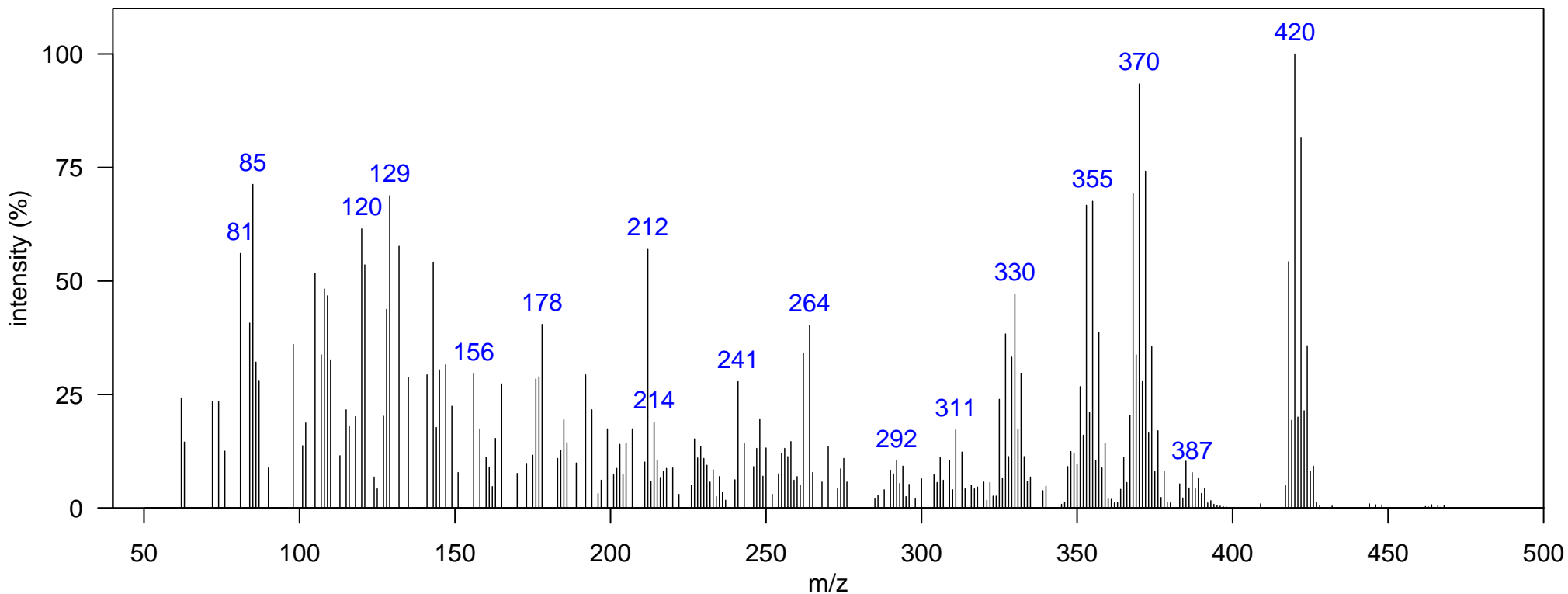
Name: Baja unknown 7

Class: Unknown

Matrix: Marine Mammal Blubber
Species detected in: Bottlenose dolphin

Instrument: GCxGC-TOF, EI Mode
1D RT, 2D RT (s): 1589.93 , 1.360

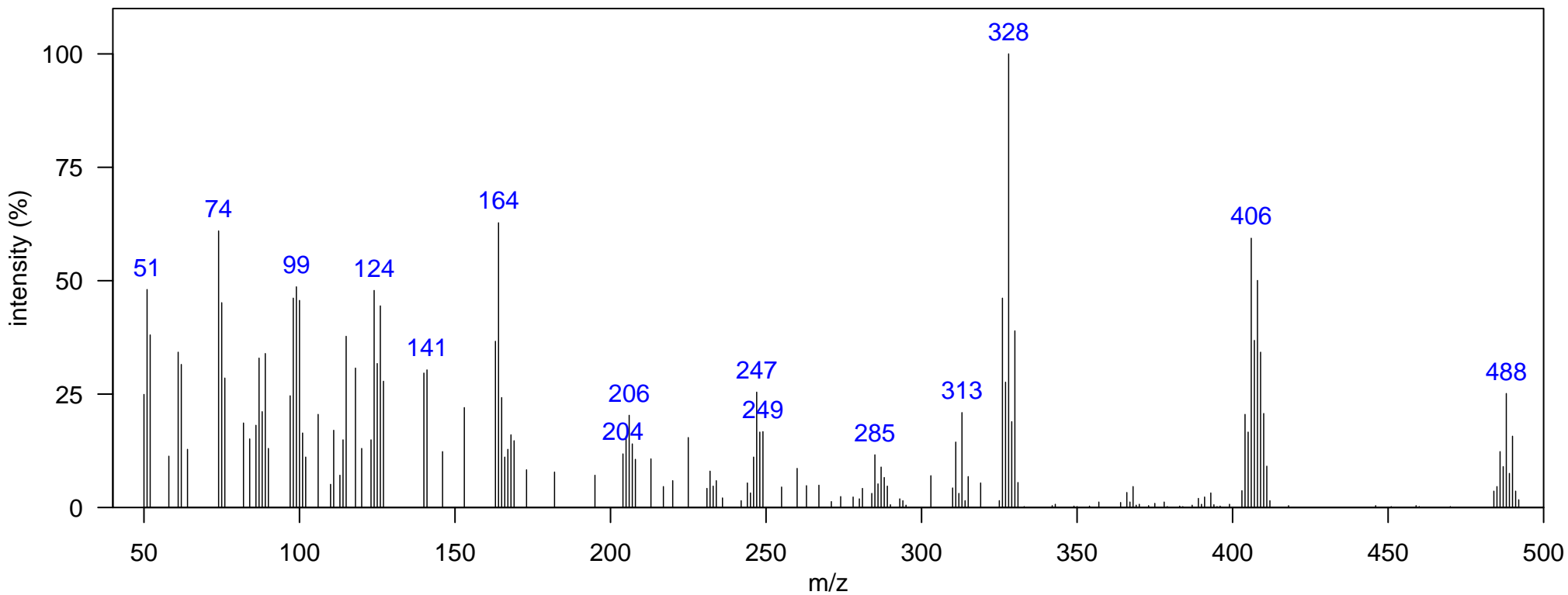
Comment: potentially halogenated compound



Matrix: Marine Mammal Blubber
Species detected in: Striped dolphin

Instrument: GCxGC-TOF, EI Mode
1D RT, 2D RT (s): 1614.42 , 1.749

Comment: potentially halogenated compound



Matrix: Marine Mammal Blubber
Species detected in: Striped dolphin

Instrument: GCxGC-TOF, EI Mode
1D RT, 2D RT (s): 1852.28 , 2.277

Comment: potentially halogenated compound

